



# Ci110FCT



**1 Year**  
WARRANTY

## Applications

The Ci Commercial Series Ci110FCT is best suited where high quality music and speech reinforcement applications require hi-fi performance such as:

- Multi Room systems
- Home Theatre systems
- Lounges, Bars, Boutiques
- Boardrooms & Offices
- Airports, Convention Centres, Hotels
- Live Theatre/Concert Hall fill-in
- Houses of Worship
- Sports Arena

## Product information

Combining durability, reliability and UL certification with KEF's undisputed audio pedigree and consistent, high quality performance, the Ci Commercial Series is an outstanding in-ceiling speaker line-up for project work of all types.

## Features & Benefits

### ***KEF's award-winning acoustic technology***

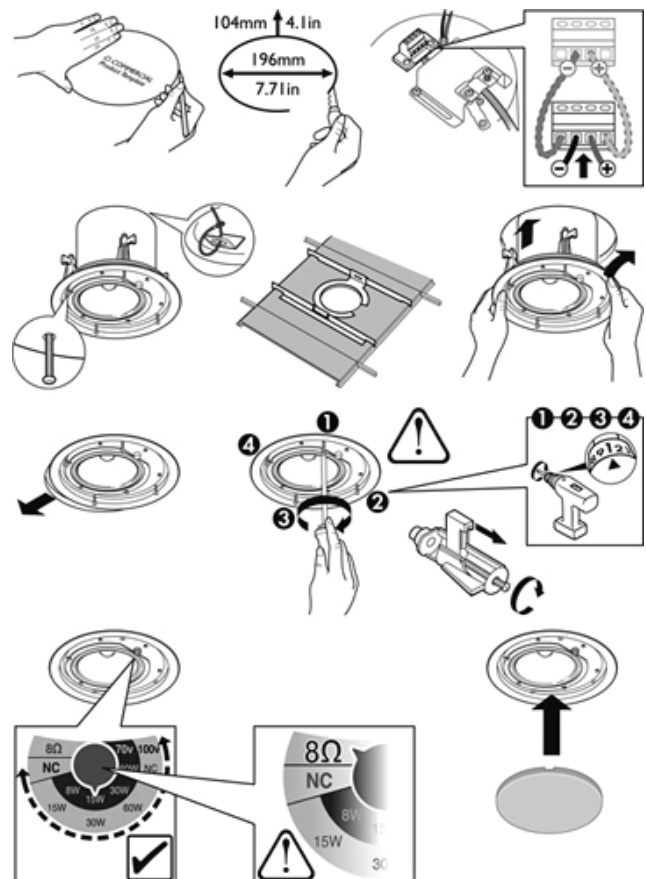
With an unrivalled record of design innovation and countless awards to prove it, KEF has led the home entertainment revolution from the start - and in the ultra-slim new V700, you'll hear what a difference advanced technology can make from the moment you switch on.



## Specifications

NOMINAL IMPEDANCE	8 $\Omega$
SENSITIVITY	89dB (2.83V/ 1m)
FREQUENCY RESPONSE	110 - 18kHz (+/-6dB) With back can/rear enclosure
CROSSOVER FREQUENCIES	2.3kHz
DRIVE UNITS	LF: 110mm
RECOMMENDED AMPLIFIER POWER	10 - 100W
FEATURES	UL2043 & UL1480-5 approved, 8Ohm or 70V: 4w, 8w, 15w 30w, 100V: 8w, 16w, 30w
PRODUCT EXTERNAL DIMENSIONS	Diameter / Depth : 220mm (8.66in.) / 110mm (4.33in.)
CUT-OUT DIMENSIONS	Diameter : 196mm (7.71in.)
MOUNTING DEPTH FROM SURFACE	With back can : 107mm (4.21in.)
UNIT MEASUREMENT	Piece
DOCUMENT DOWNLOAD	Ci Series Brochure Ci Series Specification Sheet EASE GLL Data

## Product drawing INSTALLATIONS



## Specifications

NOMINAL IMPEDANCE	8 $\Omega$
SENSITIVITY	89dB (2.83V/ 1m)
FREQUENCY RESPONSE	110 - 18kHz (+/-6dB) With back can/rear enclosure
CROSSOVER FREQUENCIES	2.3kHz
DRIVE UNITS	LF: 110mm
RECOMMENDED AMPLIFIER POWER	10 - 100W
FEATURES	UL2043 & UL1480-5 approved, 8Ohm or 70V: 4w, 8w, 15w 30w, 100V: 8w, 16w, 30w
PRODUCT EXTERNAL DIMENSIONS	Diameter / Depth : 220mm (8.66in.) / 110mm (4.33in.)
CUT-OUT DIMENSIONS	Diameter : 196mm (7.71in.)
MOUNTING DEPTH FROM SURFACE	With back can : 107mm (4.21in.)
UNIT MEASUREMENT	Piece

## Product drawing INSTALLATIONS

